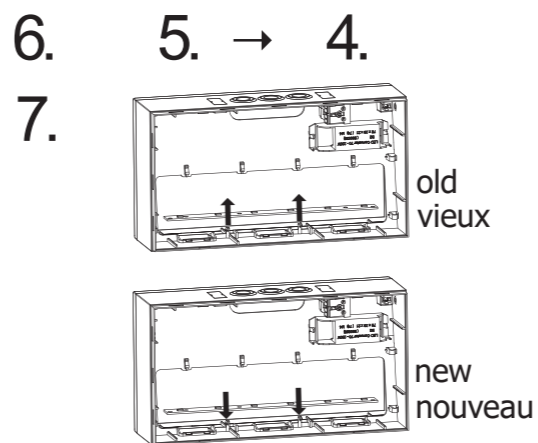
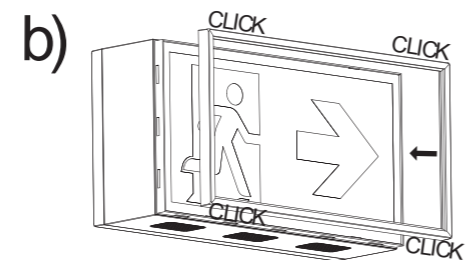
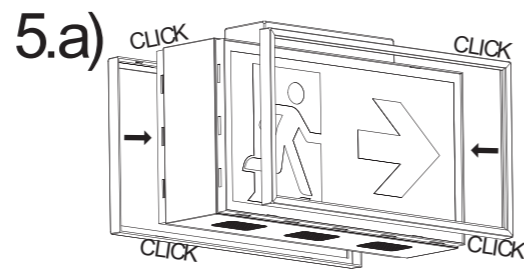
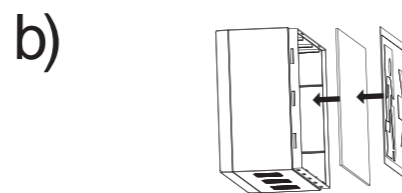
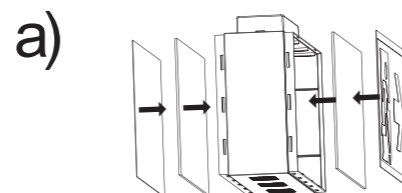
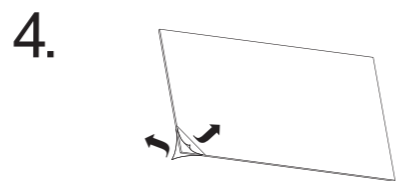
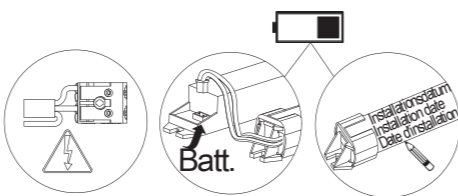
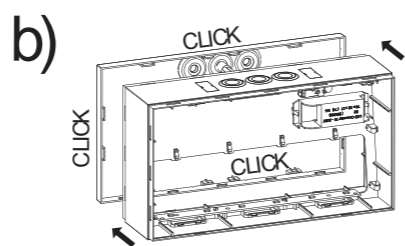
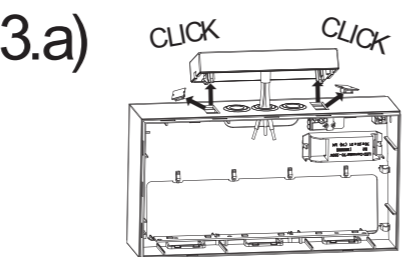
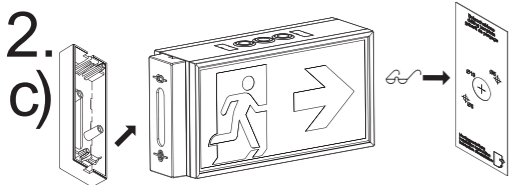
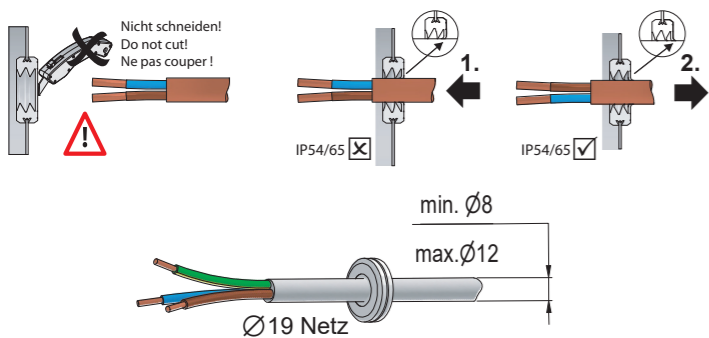
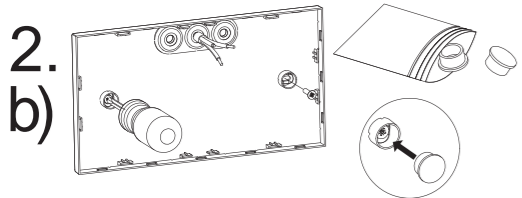
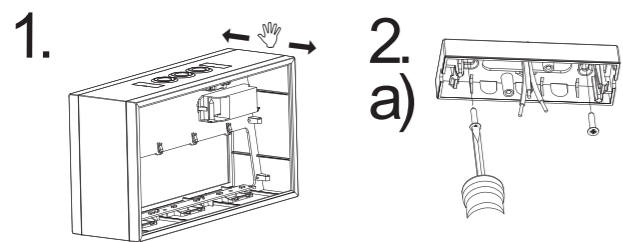
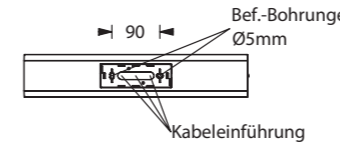
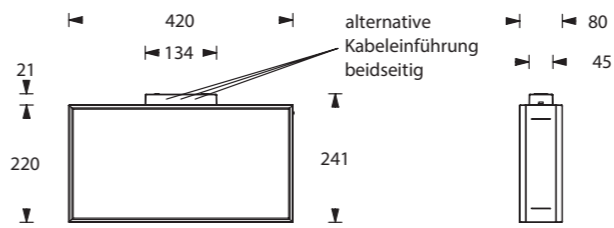
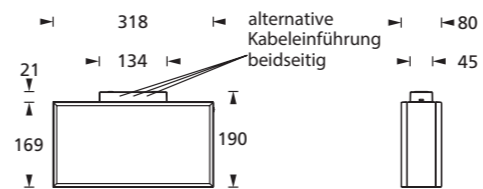
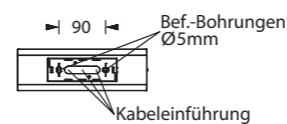
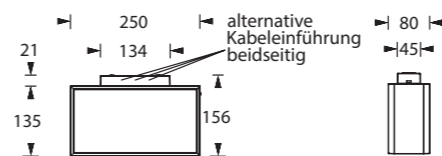


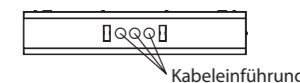
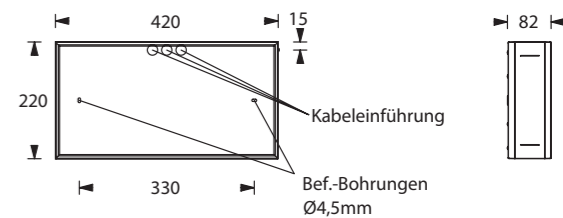
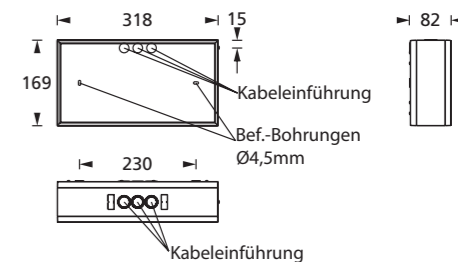
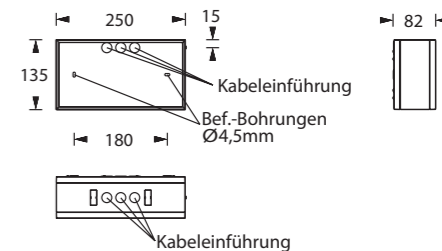
Art.-Nr./Item no./N° d'Art. 670603-V03



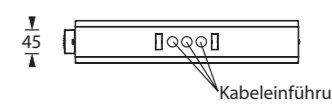
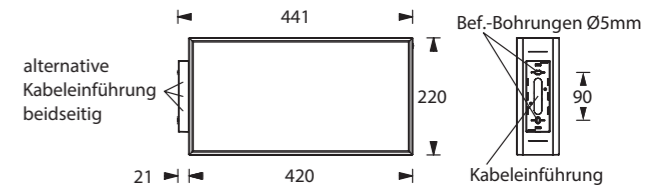
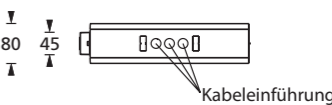
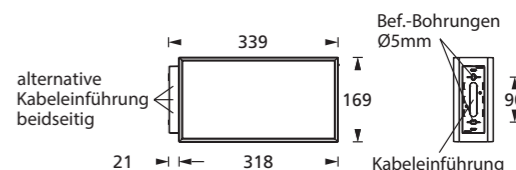
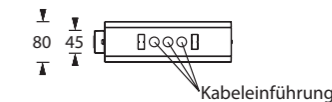
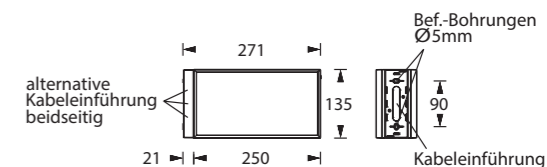
Deckenmontage / ceiling installation / montage au plafond



- Kabeleinführung**
- Cable entry guide**
- Introduction de câble**
- Bef. Bohrungen**
- Existing boreholes**
- Perçages existants**



Auslegermontage/ wall bracket mounting / support mural



- Alternative Kabeleinführung beidseitig**
- Alternative cable entry both sides**
- Entrée de câble alternatif sur les deux côtés**

